

## The 1960s: Union Electric Builds for the Future

Union Electric Membership Cooperation (EMC) grew tremendously from our beginnings in 1939, then serving 1,279 members and 512 miles of line, to 7,958 members with 1,790 miles of line by 1960.



The 1960s was a decade full of growth and system improvements for the cooperative and its members. Union EMC upgraded three substations and increased transformer sizes to accommodate the load growth in Union County.

The largest single project to this point began in 1961, which consisted of a substation and transmission line to serve the general area between

Albemarle, Aquadale, and Oakboro in Stanly County. Rights-of-way for the line and a site for the substation were secured. The transmission line was seven and one-half miles in length over all types of terrain, which took a little over a year to complete.

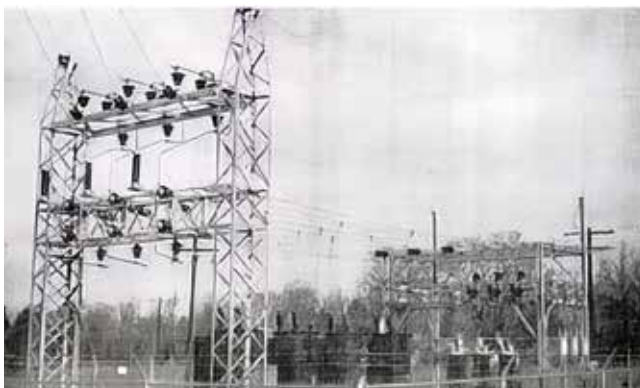
During this project, the cooperative authorized the purchase of an International 4-wheel-drive truck and a highway, heavy-duty digger. The new equipment helped the men dig holes for the poles instead of digging by hand. This purchase benefited the cooperative because our construction crew could build more lines per day.

In 1967, Union EMC constructed another new substation in the Marvin area of Union County. Building a transmission line

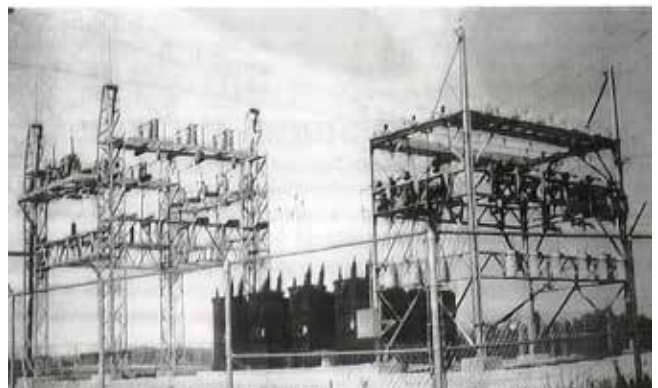
connecting the new substation and upgrading the existing line was also a part of this project. A new substation in Stanly County, built to serve areas of Oakboro and Stanfield, was completed in 1967. These system improvements were needed to serve the increased load in those respective areas.

Rounding out the decade in 1969, the *Carolina Farmer* changed its name to what we now know as the *Carolina Country* magazine. The publication changed its name to better represent all the people of many occupations and interests served by North Carolina's electric membership cooperatives.

Stay tuned for more articles recapping Union Power's 84 years of history!



Marvin Substation - Union County Circa 1967



Railroad Substation - Stanly County Circa 1967



EV Demos



The Family Sowell Band



Kids Festival



Energy Fair



Vendor Expo



**2,500**  
IN CASH PRIZES

*\*MUST BE PRESENT TO WIN*



## PowerUp Your Fall

The Annual Meeting is an event for the entire family to enjoy and learn the values of a co-op member.

- Members must register at registration to participate in all the activities and events.
- Creative Food Concepts will cater a delicious, full-course, complimentary breakfast and signature coffee drinks from Roaming Spirits.
- The Energy Fair and Expo will have vendors from Tesla, KIA, Ford Lightning from the City of Charlotte, a Lyriq from Hendrick Cadillac, Farm Bureau, Visit Stanly, ElecTel, Solectrac-electric tractor, James River Equipment, Carolina Country, and Union County Ag Extension Agency—Master Gardeners and Bee Keepers Association.
- Kids Festival is available for kids ages 3-12 to enjoy bouncy houses, a jungle gym, face painting, basketball, and meet special guests—Spider-man & Paw Patrol's Chase.
- The Family Sowell, a faith-based bluegrass band from Knoxville, Tennessee, performs this year.

# JOIN





Remember to bring your  
**REGISTRATION CARD**  
that was mailed to you  
in mid-September



Electric Lawn Equipment Demo

## Oct. 7 SCHEDULE OF EVENTS

7-10 a.m.	REGISTRATION OF MEMBERS
	COMPLIMENTARY BREAKFAST
	ENERGY FAIR & EXPO
9 a.m.	MUSICAL ENTERTAINMENT
	KIDS FESTIVAL
10:30 a.m.	BUSINESS MEETING



SCAN ME

2505 Morgan Mill Road  
Monroe, NC



Complimentary Breakfast

# NUS!



Union Power

COLLEGE SCHOLARSHIPS

LET US HELP LIGHT YOUR PATH.



APPLY NOW



 **Bright Ideas**  
EDUCATION GRANTS

TEACHERS,  
**HAVE A BRIGHT IDEA?**  
(LET US FUND IT.)

ENTER BY SEPT 15.



APPLY NOW







## REV Up Your Ride

### Try Our EV Calculator for Potential Savings

With so many car companies pledging to produce more Electric Vehicles (EVs), it is easy to see that these cars are becoming the future of transportation. With their instant torque, there are so many features and options to fit any driver.

Visit [union-power.com/energysavingscalculators](https://union-power.com/energysavingscalculators) to check out our electric vehicle calculator to help you identify and answer important questions such as:

- Is an EV right for me?
- What are the advantages and disadvantages of operating an EV?
- How much money will I save if I purchase an EV?
- How can Union Power help me?

Our electric vehicle calculator allows our members to evaluate their driving habits and compare their gas-powered vehicles with various plug-in and hybrid EVs to understand the difference in monthly costs and savings.

#### Value of Being a Co-op Member

When you are ready to purchase an EV, check with ElecTel Cooperative Federal Credit Union for financing opportunities. As a cooperative member, you can call and speak to a representative at 800-849-5600 about loans, tax incentives, and rebates for EVs, or visit [electel.org](https://electel.org).

Check out [ncdriveelectric.com/unionpower](https://ncdriveelectric.com/unionpower) for more information on EVs. This resource shows members how driving electric impacts their overall savings, the environment, and more.



Are you considering driving electric? Contact one of our energy specialists at 704-289-3145 for questions, or visit [union-power.com/energysavingscalculators](https://union-power.com/energysavingscalculators) and check out our Electric Vehicles Calculator for more information.



# A Return of Your Investment

## Capital Credits Coming Soon

Paying your electric bill isn't just payment for service—it's an investment in your cooperative. As a member providing a share of our capital, you're building equity in the co-op, and capital credits are your return of that investment.

Each year, any margins (revenues in excess of expenses) generated by Union Power are proportionally allocated to you as capital credits and are held in an account in your name. Those margins are then reinvested into the cooperative for capital expansion, system improvements, and ongoing operations and maintenance activities.

Once the cooperative has met its financial requirements, and after a period of time, capital credits are returned (paid) to you.

Based on the continued financial strength of the cooperative, the board of directors approved a capital credit retirement of approximately \$4.0 million to be distributed in 2023. This year's capital credit retirement was comprised of 100% of the unretired allocation balance from 2005, as well as 57.5% of the unretired allocation balance from 2006. This means that if you had service with us during the years of 2005 or 2006, you will receive a payment during September.

Those active members who are eligible for a payment will see a credit on their September electric bill. Former members who moved off of our system will receive a check in the mail.

Capital credits are one of the tangible benefits of being a member of an electric co-op and a big part of what makes us different from other utilities. You can visit [union-power.com](https://union-power.com) to learn more about capital credits.

---

**\$ 4.0 Million**  
**Capital Credits distributed  
in 2023**

---



### Energy Efficiency Tip of the Month

Fall is the perfect time to schedule a tune-up for your heating system. Home heating accounts for a large portion of winter energy bills, and no matter what kind of system you have, you can save energy and money by regularly maintaining your equipment. Proper equipment maintenance, insulation, air sealing, and thermostat settings can save about 30% on your energy bills.

# INTRODUCING OUTAGE TEXTING

Our newest service, Outage Texting, offers real-time outage alerts and reporting capabilities through text messaging. UPC members will be auto-enrolled, so please be sure to save us to your contacts.



**UnionPower**  
 **Cooperative**



# Right-of-Way Clearing

During the next month, you may see our tree-trimming crews in your neighborhood: Vendors: Lewis Tree Service, Lucas Tree Experts, and Xylem Inc.

**Cabarrus County:** Barrier Store Rd, Cauble Rd, County Line Rd, Cox Rd, Crayton Rd, Mauney Rd, Mission Rd, Smith Lake Rd

**Stanly County:** Alonzo Rd, Austin Rd, Barbees Grove Rd, Bethlehem Church Rd, Bull Hill Rd, Cherokee Rd, Claude Dr, Converse Rd, Creekview Ln, Crest Gold Dr, Curtis Rd, Doo Little Ln, Dusty Rd, Efird Rd, Eight St, Farmbrook Ct, Farmers Ln, Friendly Dr, Guy-Verne Rd, Hatley Rd, Hazard Rd, Hill-Ford Rd, Hills-View Rd, Hwy 138, Hwy 24-27, Jacob Rd, Joy Rd, Landwood Tr, La Rock Ln, Maxton Rd, McLester Rd, Misty Ln, Norton Rd, Old Mill Rd, Old School Rd, Pebblestone Cir, Prince Rd, Richard Sandy Rd, Ridgecrest Rd, Sam Rd, St Martin Rd, Stogner-Little Rd, Substation Rd, Sun Rise Ln, Teeter Rd, Wilson Ln

**Union County:** Army Rd, Fish Rd, Hwy 205, Old Kennedy Ford Rd, Olivia Ct



For more information about Union Power's vegetation management program or tree pruning practices, please call Wil Ortiz at 704-289-3145 (ext. 3323) or Carrie Lorenz-Efird (ext. 3291). Also, visit [union-power.com/vegetation-management/crew-locations](https://union-power.com/vegetation-management/crew-locations) for monthly right-of-way clearing updates and information on our programs.



As a Union Power Cooperative member, you agree to: Comply with all aspects of the service agreement and agree to be bound by the cooperative's Articles of Incorporation and Bylaws; and furnish, without cost to the cooperative, all necessary distribution easements, and rights-of-way.



A Touchstone Energy® Cooperative

The Cooperative Review newsletter is published monthly for the members and friends of Union Power Cooperative.

Greg Address  
**Exec. Vice President & General Manager**

## BOARD OF DIRECTORS

Lee Roy Kirk, Jr.  
**President**

Dent H. Turner  
**Vice President**

Sherise Jones  
**Secretary-Treasurer**

David G. Hyatt  
**Asst. Secretary-Treasurer**

Tom J. Caudle  
Winnie C. Honeycutt  
Thomas E. Porter, Jr.  
David E. Smith  
Sue B. Threatt

[union-power.com](https://union-power.com)

**Toll-Free Customer Service**

1-800-922-6840

**24-Hour Outage**

**Reporting & Account Info**

1-800-794-4423

