

Cooperative Review

MARCH 2023

**UnionPower
Cooperative**
A Touchstone Energy® Cooperative



Power Strips Stop Phantom Load

Many of us are victims of phantom load. Phantom load is used to describe any appliance or electronic that constantly uses energy, even while it is turned off or on sleep mode. TVs, cell phone chargers, and gaming devices are the most common electronics that create phantom loads.

Installing a smart power strip in your home is a quick and easy way to start saving money while making your household a little more energy-efficient. Unlike traditional power strips, they have built-in features designed to reduce the amount of energy used by standby electronics that consume energy even when they're not in use. As a result, they are becoming more prominent in protecting your devices and helping reduce energy usage.

There are three types of smart power strips to choose from:

- **Timer-equipped:** These power strips have outlets that are controlled by programmable timers. Devices plugged into them can be scheduled to automatically turn off or on at designated times of day or night.
- **Occupancy sensing:** Occupancy sensing power strips have outlets that are controlled by a motion detector. Devices plugged into them can automatically turn off

or on in response to your physical presence or after a user-defined period of time elapses (i.e., anywhere from 30 seconds to 60 minutes).

- **Current sensing:** These power strips can automatically turn several outlets off or on when they detect that a monitor (plugged into the “master outlet”) either enters a low-powered sleep mode, is turned off, or is turned on. Used in combination with monitor power management features, these power strips can turn just about any electric device off and on automatically.

Be sure to do your research to see which of these is the best option for your home. Over time, you'll notice little changes make a lot of difference.



Visit union-power.com/energysavingcalculators and click on our Vampire Calculator to see how much those phantom loads can cost you.

Let Our Energy Specialist Become Your Trusted Energy Advisors

When investing in your home's efficiency, do you ever need advice from a reliable, trusted source? Union Power has the resources and tools to answer any questions or concerns about investing in your home's efficiency. From understanding your home's energy use to considering renewable home energy, researching electric vehicles, or being interested in a time-of-day rate, let our energy specialists be your trusted energy source.

Our energy specialists have many resources and tools at their fingertips to help our members manage their energy.

For instance, the latest resource developed at Union Power alerts our energy specialists of member accounts that have exceeded historical metrics. We can notify members of increased consumption before they receive their next bill. By analyzing the meter data for these accounts, our specialists can help identify what may be the direct cause of the higher-than-normal energy consumption.

For example, high consumption issues could result from an inefficient or defective HVAC unit, water heater, or well pump. In addition, pool pumps, hot



tubs, or home efficiency issues (lack of insulation, weatherization issues, appliance efficiency) can also be significant contributing factors.

Notifying the member of these issues in the middle of a billing cycle can expedite any necessary repairs, thus saving the member energy and money.



Home Improvements

As homes get older, they tend to need more attention. Our energy specialists can review your consumption results and discuss potential contributing factors. Depending on the age and mechanics of the home, there may be opportunities to reinvest in your home for better results. By improving your home's efficiency, we can discuss the effects these changes will have on your power bill!



Solar Energy

We recommend that you establish goals when considering solar. Having reasonable expectations of how much offset you want to accomplish with your daily consumption will determine the size of the solar system needed. Establishing goals will also determine if battery storage will be needed. It is also important to know your budget. The system's size and battery will drive the cost of a solar system.

After we discuss goals, our energy specialists perform an account analysis of the last 12 months'

consumption to determine if results align with the home's size. In addition, we discuss the current energy efficiency of your home, review the main contributing factors toward daily power consumption, and help you determine how much your lifestyle habits and choices contribute.

Unfortunately, there is no one-answer-fits-all when considering solar. But, before making a final

decision, consult with one of our energy specialists, as we are here to support and educate you on how solar works.

Electric Vehicles (EV)

If you want to learn more about electric vehicles and how driving an electric vehicle can impact your wallet, the environment, and more, one resource is to visit ncdriveelectric.com/unionpower.

Another resource is to call our energy specialists. We're here to help you! We can help you answer questions about the different types of chargers, when is the best time to charge your electric vehicle, and what the best electric rate would be to meet your needs.

Our energy specialists are here to help you manage your energy, determine your need for solar and home improvements, and decide if an EV is right for you.



Contact one of our energy specialists at 704-289-3145, Billy Brantley (3266) or Chris Love (3245), Monday through Friday, from 8 a.m. to 5 p.m., to help you manage your energy needs.



**AGRICULTURE
IS THE MOST
HEALTHFUL,
MOST USEFUL AND
MOST NOBLE
EMPLOYMENT
OF MAN.**

--- GEORGE WASHINGTON

**MARCH 21, 2023
HAPPY NATIONAL
AGRICULTURE DAY**

#ThankAFarmer



Touchstone Energy®
**Sports Camp
Scholarships**

APPLICATION DEADLINE : MARCH 31ST

BALL IN

Rising 6th & 7th graders can apply for a summer basketball camp scholarship!



CAROLINA MEN'S BASKETBALL CAMP
UNC-CHAPEL HILL



WOLFPACK WOMEN'S BASKETBALL CAMP
NC STATE UNIVERSITY



*We are your **heating, cooling,**
and **electrical** experts serving
the Union Power community.*

**Qualify for up to \$2,000 in tax credits
with the Inflation Reduction Act!**

Restrictions apply. Contact us for details.



High-Efficiency Trane® Heat Pumps. **MORE AFFORDABLE THAN YOU KNOW.**

Now is the perfect time to purchase a new high-efficiency Trane® heat pump! They deliver clean energy, keeping you comfortable all year long and helping you save on your energy bill. Be sure to check the HSPF and SEER ratings for their efficiency.

Heat pumps cost less to operate than a conventional furnace and air conditioner. Your annual energy bills will decrease, and you will reap the financial benefits in no time.

Contact Union Services to discuss our affordable monthly payment plans. We have one that will fit your needs.



704-283-9047
savewithunion.com

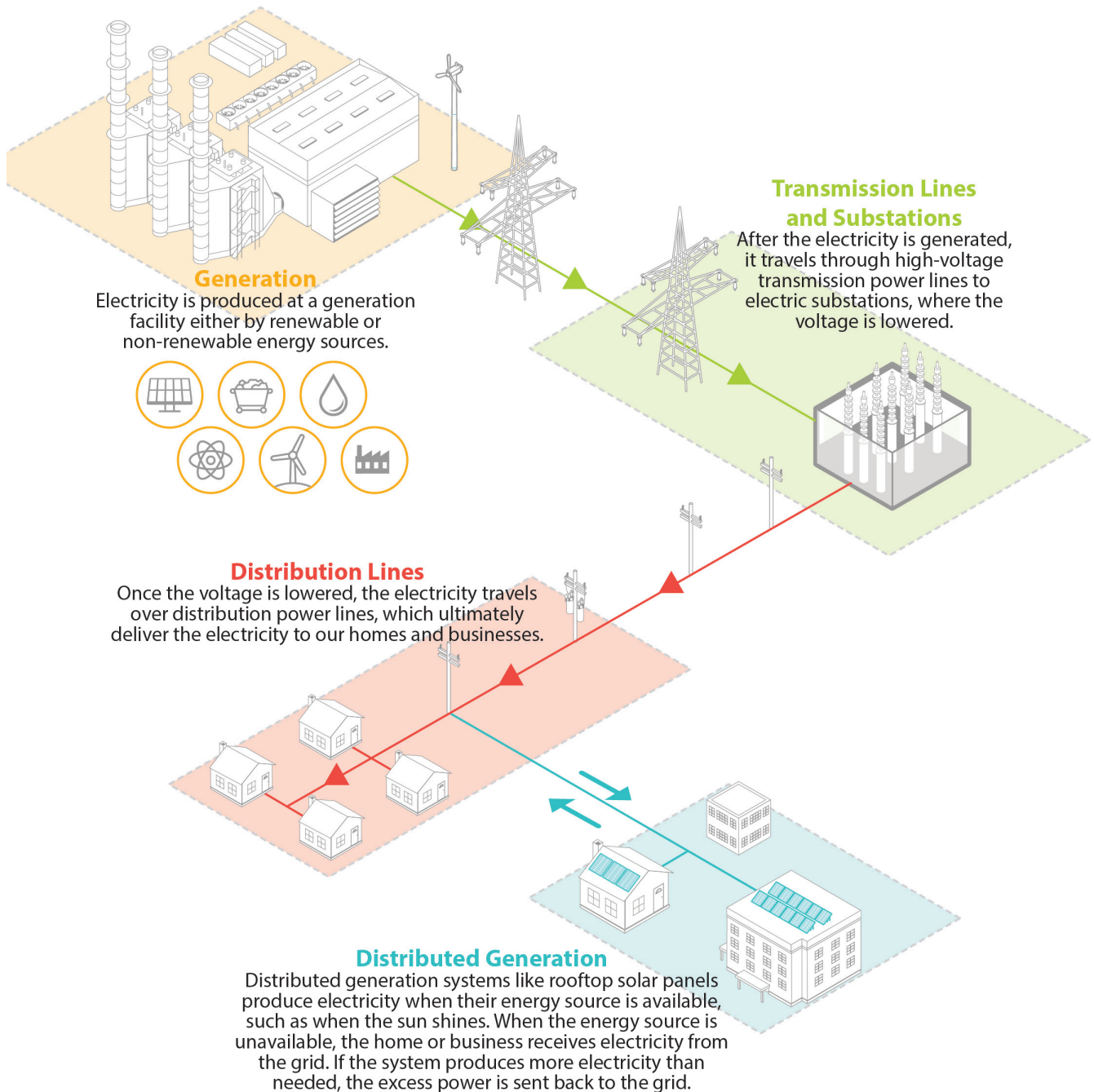


FREE Estimate



The Wells Fargo Home Projects credit card is issued by Wells Fargo Bank, N.A., an Equal Housing Lender. Special terms apply to qualifying purchases charged with approved credit. The special terms APR will continue to apply until all qualifying purchases are paid in full. The monthly payment for this purchase will be the amount that will pay for the purchase in full in equal payments during the promotional (special terms) period. The APR for purchases will apply to certain fees such as a late payment fee or if you use the card for other transactions. For new accounts, the APR for purchases is 28.99%. If you are charged interest in any billing cycle, the minimum interest charge will be \$1.00. This information is accurate as of 10/02/2022 and is subject to change. For current information, call us at 1-800-431-5921. Offer expires 2/28/2024.

HOW ELECTRICITY REACHES YOU





Now is the Time for Spring Planting

Beautiful weather is on the way, and it is time to plant around the yard. Union Power is here to guide you on planting around our power lines and equipment. Planting and putting fences or other obstructions around utility equipment can be dangerous for you and utility workers.

If planting trees in the right-of-way is necessary, they should be a low-growing species – no taller than 20 feet at maturity – and should be planted at the edge of the right-of-way rather than directly under the power lines. If the trees in the right-of-way area pose safety issues, Union Power will cut down or prune them according to planting guidelines. Refer to the Planting Guidelines & Clearances at union-power.com/vegetation-management.

If you plan on planting or putting any obstructions around the transformer zone, please designate 10 feet away from the transformer, or look at the sticker on the outside of the transformer for more information regarding the appropriate distance requirements.

Learning where to plant and the proper distance from the right-of-way and other equipment areas is very important for you and our cooperative.



Contact Wil Ortiz at 704-289-3145 (Ext. 3323) for more information on planting requirements, or visit union-power.com/vegetation-management.



Let's Talk About Generator Safety

Storm season is upon us, which means a greater potential for power outages. Union Power reminds you to play it safe if you plan to use a portable generator during an outage. With proper use and maintenance, portable generators can provide great convenience during an outage. However, when generators are misused, they can be extremely hazardous. In a 2022 report, the Consumer Product Safety Commission estimated 85 U.S. consumers die every year from carbon monoxide (CO) poisoning caused by gasoline-powered portable generators.

Do's

- Install backup Carbon Monoxide alarms.
- Keep children and pets away from portable generators at all times.
- Position generators at least 25 feet outside the home, away from doors, windows, and vents that can allow CO to enter the home.
- Ensure your generator is properly grounded. Use a portable ground fault circuit interrupter (GFCI) to prevent electric shock injuries.
- Use three-pronged extension cords that are rated to handle the generator's load. Inspect extension cords for cuts, frays, or other damage before use.

Don'ts

- Operate a generator inside your home or an enclosed (or partially-enclosed) space. Generators produce high levels of CO, which can be deadly.
- Open windows or doors while the generator is running.
- Rely on generators as a full-time source of power. They should only be used temporarily or in emergencies.
- Overload generators.
- Connect generators directly into household wiring unless an appropriate transfer switch is installed. If a generator is connected to a home's wiring without a transfer switch, power can back-feed power lines and electrocute utility workers while making repairs.



While generators provide convenience during power outages, they can quickly become hazardous, even deadly, if improperly operated. Before operating a portable generator, read the owner's manual for important safety information and tips.

Call our energy specialists at 704-289-3145 for additional questions regarding the proper use of portable generators.

If you are interested in purchasing, installing, or determining the type of generator that suits your home, contact Union Services at 704-283-9047.

We will be glad to help you prepare before the storm.



Energy Efficiency Tip of the Month

Washing windows and screens is a great way to practice energy efficiency during spring cleaning. Clean windows and screens make your home brighter by allowing more sunlight in, reducing the need for lamps and fixtures. Clean screens also allow more fresh air in the home when the windows are open to recycle indoor air. Natural light and clean air are energy savers, and they enhance overall health and productivity.

Right-of-Way Clearing

During the next month, you may see our tree-trimming crews in your neighborhood: Vendors: ABC Professional Tree Services, Asplundh Tree Expert Co., Lewis Tree Service, Lucas Tree Experts, and Xylem Inc.

Mecklenburg County: Allen Black Rd, Castleford Dr, Dartford Ln, Fieldlark Ln, Helena Circle, Lawyers Rd, Long Rd, McGregor Dr, Rothwell Dr, Thompson Rd, Union Rd, Via Siena Dr, Waltham Pl, Yarmouth Rd

Union County: Army Rd, Banyan Way, Bonds Grove Church Rd, Cedar Knoll Dr, Crane Rd, Emerald Woods Dr, Fish Rd, Gray Byrum Rd, Greentree Ln, Hwy 205, Laurelwood Ln, Linden Ct, McGregor Dr, N Rocky River Rd, Old Kennedy Ford Rd, Prince Valiant Dr, Rainbow Dr, Red Bud Tr, Sandalwood Dr, Stacy Howie Rd, Union Rd, Viking Dr, W Lawyers Rd, Waxhaw Marvin Rd

Stanly County: Bost Rd, Briarstone Ln, Burleson Rd, Canton Rd, Carriker Rd, Cedar Ln, Cedar Ridge Ln, Countryside Ln, Crisco Dr, Crystal Rd, Dellan Ln, Doc Rd, Fink Rd, Hallie Ln, Hedge Rd, Herman Rd, Hobert Rd, Hollybrook Dr, Imperial Way, Isenhour Ln, John Deere Dr, Little Bear Rd, Maggie Frick Rd, NC Hwy 24-27, Odell Dr, Offie Rd, Parker Rd, Ridenhour Rd, Rutherford Rd, Scenic View Dr, Sides Rd, Snickers Ln, St Martin Rd, Thompson Rd, Village Dr, Von Rd, Wyatt Rd

Rowan County: Aviation Ln, Bell Rd, Bobwhite Ln, Cemetery St, Daybreak Ridge Dr, Deese St, Eudy Rd, Fall St, Fontana Dr, Fraley Acres Ln, Gold Branch Rd, Goodman



Rd, High Rock Rd, Ingram Rd, Jack Rabbit Ln, Leslie Rd, Mook Mock Dr, Morgan St, NC Hwy 49, NC Hwy 8, Old Beatty Ford Rd, Parker Memorial Rd, Rider Rd, Rowan Cabarrus Rd, Russell Rd, School St, Spring St, Summer St, Walnut St, Wiles Rd, Willie Rd, Winter St

For more information about Union Power's vegetation management program or tree pruning practices, please call Wil Ortiz at 704-289-3145 (ext. 3323) or Carrie Lorenz-Efird (ext. 3291). Also, visit union-power.com for monthly right-of-way clearing updates and information on our programs.



As a Union Power Cooperative member, you agree to: Comply with all aspects of the service agreement and agree to be bound by the Cooperative's Articles of Incorporation and Bylaws; and Furnish, without cost to the Cooperative, all necessary distribution easements, and rights-of-way.



A Touchstone Energy® Cooperative

The Cooperative Review newsletter is published monthly for the members and friends of Union Power Cooperative.

Greg Andress
Exec. Vice President & General Manager

BOARD OF DIRECTORS

Lee Roy Kirk, Jr.
President

Dent H. Turner
Vice President

Sherise Jones
Secretary-Treasurer

David G. Hyatt
Asst. Secretary-Treasurer

Tom J. Caudle
Winnie C. Honeycutt
Thomas E. Porter, Jr.
David E. Smith
Sue B. Threatt

union-power.com

Toll-Free Customer Service

1-800-922-6840

24-Hour Outage

Reporting & Account Info

1-800-794-4423

