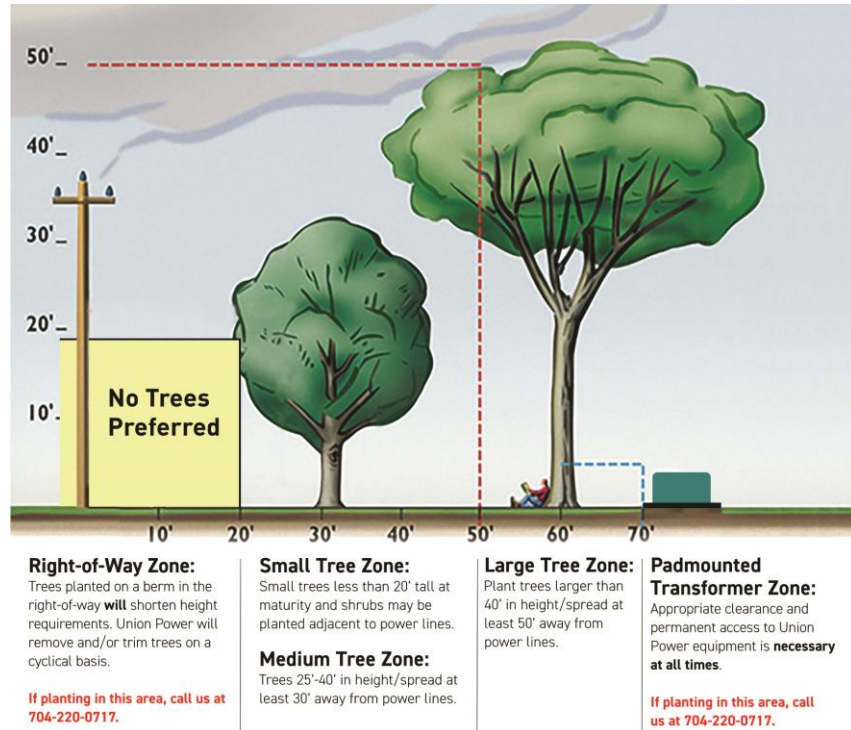


Integrated Vegetation Management Program: Tree Replacement Program (TRP)

The Tree Replacement Program targets trees that are wrongly planted in right-of-way zones in our service territory. This is one of many Tree Line USA Utility certification program requirements.



Upon agreement on a planted tree removal and replacement, Union Power Cooperative's IVM Department **will**:

- Cut down and remove all debris (ex. branches and logs) from the property
- Perform stump grinding (upon completion of NC811 locate entered by Member or stump grinding vendor)
- Add dirt/seed/straw if placement of the replacement tree isn't in the same hole as the original tree
- Provide a list of potentially available planting material
- Plant tree/bush chosen by Member (planting material is obtained from local nurseries)
- Fertilize new plant (100% organic fertilizer)
- Put down mulch (we use brown-dyed hardwood mulch)
- Tie the tree down if warranted (normally not necessary)
- Water the plant upon planting

The Member agrees to:

- Perform watering as needed to keep the plant hydrated (too much or too little is a problem)
- Fertilize the plant
- Remove tie downs (if any) one year after installation
- Accept that there are no warranties or guarantees expressed or implied as to the survival of the plant chosen
- Accept that there are no replacements for plants that die