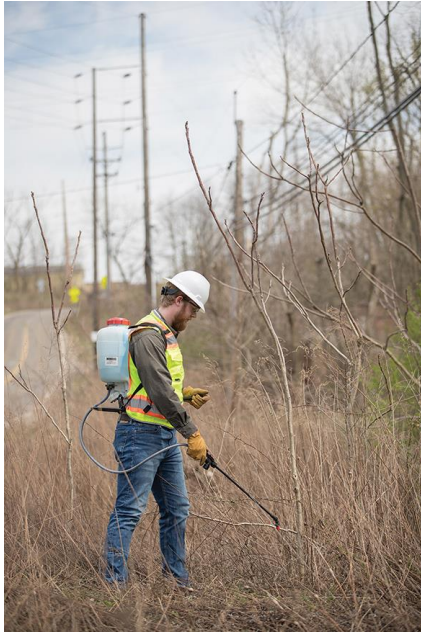


## Integrated Vegetation Management Program: ROW Herbicides Control Program

The use of low-impact herbicides in the right-of-ways (ROWs) aid in controlling invasive and fast-growing tree species. The sought after result is low-growing vegetation and habitat creation for pollinators and wildlife.



For sites targeted for herbicide control, Union Power Cooperative's IVM Department **will**:

- Assess the sites to be targeted a year before the actual spray work is done.
- Employ properly licensed vendors with a good track record to perform the work.
- Spray outside of pollinator feeding seasons (normally done in the fall and/or winter months).
- Use very low concentration formulations.
- Target trees are species-specific.
- Low volume backpack spray work only.
- Remove from the target list properties whereupon the Member does not want spray work done. For such properties, the Member agrees to perform the regrowth control of incompatible species on their own. If vegetation "escapes" the Member's maintenance then we will apply herbicide control agents on the target regrowth.

We **will not**:

- High volume spray work targeting the entire right-of-way zone.
- Use Glyphosate (this is the active ingredient in Roundup).
- Provide notification in advance of performing the work.

Union Power Cooperative is committed to good stewardship, right-of-way maintenance practices that enhance and promote a habitat for a whole host of insect, avian, and animal species that procure nourishment and inhabit such ecologically-active zones.